

IPSWICH SEAFARERS' CENTRE



24 hour drop-in access via coded keypad
(code available from agent or officer at security gate)

Telephones • Free WiFi • TV • Chapel • Library



PORT OFFICE & SECURITY

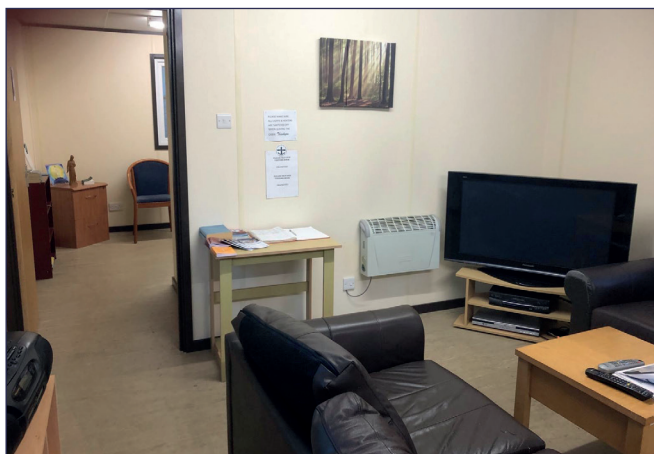
Orwell Navigation Service (ONS)
Dock Tower (24hr) 01473 211 066

LOCAL PORT HEALTH AUTHORITY

 Suffolk Coastal PHA 0845 646 1310
port.health@scpha.gov.uk

MARITIME AND COASTGUARD AGENCY UK

ColchesterMO@mcga.gov.uk 020 3908 5165



PUBLIC TRANSPORT

Train: National Rail Enquiries
www.nationalrail.co.uk 0345 748 4950

Bus: Traveline
www.traveline.info 0871 200 2233

Coach: National Express
www.nationalexpress.com 0871 781 8181

Air: Stansted Airport
www.stanstedairport.com 0844 335 1803

TAXIS

Hawk Express 01473 222 222

LOCAL HOSPITAL

Ipswich Hospital, Heath Road 01473 712 233

NHS Helpline 111

SEAFARERS' TELEPHONE HELPLINE

SeafarerHelp...the lifeline for seafarers (ISWAN)
www.iswan.org.uk/seafarerhelp +44 (0)20 7323 2737



Produced by the Merchant Navy Welfare Board (registered as a charity No. 212799 in England & Wales and No. SC039669 in Scotland) and the local seafarer welfare charities. Map courtesy of Open Street. Please pass any amendments directly to MNWB on 02380 337799 or visit: www.mnwb.org

Issue Date 10/24

PORT INFORMATION LEAFLET

IPSWICH

Welcomes All Seafarers



Ipswich Seafarers' Centre
Dock Head, Ipswich, IP3 ODP Tel: 01394 673 599

"Welcome to Ipswich! We very much hope that, as well as finding all you need for work, you can make the most of exploring our historic town.

Our small seafarers' centre is unmanned. However, we hope that you'll make yourselves at home and contact one of the chaplains below if we can help in any way".

SEAFARERS' WELFARE ORGANISATIONS



Stella Maris
Port Chaplain 07758 356 372
www.stellamaris.org.uk



The Mission to Seafarers
Port Chaplain 07557 512 568
www.missiontoseafarers.org



Seafarers' Christian Friend Society 01473 274 632



ITF Inspector 07706 312 270
patten_tony@itf.org.uk
ITF HQ seafsupport@itf.org.uk
www.itfseafarers.org



Nautilus International 0208 989 6677
www.nautilusint.org



RMT 0800 376 3706
www.rmt.org.uk



Scan here to
download a
digital copy of
this leaflet



TOURIST INFORMATION

www.allaboutipswich.com

LIBRARY / INTERNET FACILITIES

Ipswich County Library, Northgate Street 01473 927 260

PLACES OF WORSHIP

Anglican: St Lukes, Cliff Lane
www.ipswichwaterfrontchurches.co.uk 07340 320 195

Catholic: St James', Landseer Road 01473 726 701

Baptist: Christ Church, Tackett Street
www.christchurch-ipswich.org.uk 01473 231 097

For details of places of worship for other faiths or denominations, please speak to a Port Chaplain.

BANKS / POST OFFICE / MONEY TRANSFER

Post Office, Westgate Street 0345 722 3344
 (located inside WHSmith)
 (services include MoneyGram & Western Union)

For money transfer on a Sunday
 TUI, Upper Brook Street 01473 217 644

Most major banks can be found on Tavern Street.

SHOPPING CENTRE

Ipswich City Centre is home to all the major retail chains. The majority of these can be found in the Sailmakers and Buttermarket Shopping Centres and on Westgate, Tavern and Buttermarket Streets.

Poundland, Sailmakers 01473 216 547

Aldi, Hines Road 0800 042 0800

Sainsburys Supermarket, Upper Brook Street 01473 250 877

ENTERTAINMENT / LOCAL ATTRACTIONS

Cineworld, Cardinal Park
www.cineworld.co.uk

Goals Ipswich (5-a-side pitches) 01473 300 060
www.goalsfootball.co.uk

Superbowl (10-pin bowling) 01473 552 963
www.superbowluk.co.uk

SPORTS FACILITIES

Crown Pools, Crown Street 01473 433 655
 (Swimming & Gym)

